

# Seaview

[www.seaviewisleoflewis.co.uk](http://www.seaviewisleoflewis.co.uk)



*The Isle of Lewis ... far away from it all!*



*Remote tranquillity,  
Island exploring,  
wild-life spotting,  
walking, water sports,  
fishing and much more*



*It's life at the edge, escape to the edge!*

# Seaview

[www.seaviewisleoflewis.co.uk](http://www.seaviewisleoflewis.co.uk)



*Self Catering Accommodation for up to 6 people*

*Grimshader, North Lochs, Isle of Lewis*

*Outer Hebrides (Western Isles) - Scotland*

A holiday *'far away from it all'*

Seaview is situated almost at the end of the road in Grimshader, a hamlet of about twenty-five houses spread along a three mile stretch of single track road. It looks out over the entrance of the sea Loch Grimshader and across the Minch to the mountains on the Scottish mainland, around the Lochinver area and the spectacular mountains of Assynt.

## **ACCOMMODATION COMPRISES**

- Two double bedrooms (*one on ground floor*)
- One twin bedroom
- Shower room & Saniflo loo (*upstairs*)
- Bathroom (*downstairs*)
- Sunporch
- Lounge
- Kitchen/dining area
- Washing machine/drier
- Hob, double fan oven and microwave
- Fridge/freezer
- Radio, CD and tape player
- 14" portable TV with video and DVD player
- Telephone
- Hairdryer
- Cot and high chair available
- Books, CDs, videos and DVDs
- Board Games and jigsaws
- Garden furniture
- Garden shed and garage for storage
- Barbeque
- Parking for 2/3 cars
- 2 adult mountain bikes & helmets
- Telescope and binoculars
- BT broadband
  
- Sorry no pets or smoking

If you are interested in spending some time at Seaview then please contact Andrew on 01582 613196 or email to [andrew.green37@ntlworld.com](mailto:andrew.green37@ntlworld.com) for further details.

## **WE SUPPLY**

Bed linen, towels, electricity, oil, also washing-up liquid, washing liquid, toilet paper, etc. An oil fired combi boiler supplies instant hot water and heating together with a number of storage heaters.

Seaview is just 7/8 miles, (15 minute drive) from Stornoway where there is everything you would need, a Somerfields and Co-op for food shopping (open till 8pm Mon & Tues and 9pm Wed to Sat).

Sundays is almost total shut down on the island so make sure you have food and petrol, (there is the BP petrol station in Stornoway open until early Sunday afternoon which sells basics). A couple of restaurants are open and we can recommend a few.

Information for your visit can be downloaded from several internet guides to Scotland search Isle of Lewis, Harris, Outer Hebrides or Western Isles ([www.escapetotheedge.co.uk](http://www.escapetotheedge.co.uk). click Western Isles)

## **TRAVEL**

Car Ferries:

For timetables, reservations and bookings see Caledonian MacBrayne website ([www.calmac.co.uk](http://www.calmac.co.uk))

They operate the following routes:

Uig (Isle of Skye) - Tarbert (Harris end): 1 hour 30 minutes

Ullapool - Stornoway (Isle of Lewis): 2 hours 40 minutes

By Air:

Loganair/British Airways operate from Inverness & Glasgow.

[www.ba.com](http://www.ba.com)

bmi (british midland) operate a 55-minute direct service from Edinburgh.

[www.flybmi.com](http://www.flybmi.com)

Eastern Airways from Aberdeen. [www.easternairways.com](http://www.easternairways.com)

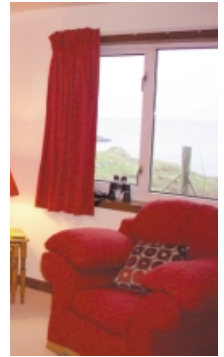
Highland Airways operate an 18-seater Island Hopper service linking Glasgow and Inverness with Stornoway and Benbecula.

If you book early enough then fares can be quite cheap.

Car hire is available from locations in Harris and Lewis.



The cosy lounge has a three seater settee and two chairs, an electric stove and well stocked book shelves also CDs, videos and DVDs.



Modern fully fitted kitchen/ diner is equipped with an electric double fan oven, ceramic hob with ventilation.

Microwave, toaster, electric mixer and blender, washer/dryer and fridge/freezer. Table and chairs for six.





*Ground floor double bedroom furnished in the Shaker style.*



*Upstairs double bedroom is a very cosy room finished in pine with draw units and built in wardrobe.*



*Upstairs twin bedroom also in pine with draw units and built in wardrobe.*



*Looking across the landing to the twin room, showing the shower room door.*

Known for many, many years as Seaview, the original croft house occupying the site was extended in the late 60's with the kitchen/bathroom section being built onto the back. In 1992 the old croft house was demolished and rebuilt to modern specifications.

'Listen' to the silence, only the sounds of nature; the sea lapping against the rocks, the breeze, the wildlife calling! Take a leisurely breakfast in the sunporch or on the decking where you will be able to watch a diverse range of sea birds such as cormorant, oyster catcher, shag, razorbill, terns, gulls and gannets diving spectacularly, you may also see eagles, buzzards and other birds of prey. Spot the ferry which passes by, also plenty of fishing boats, yachts and maybe the odd submarine!

On the drive to the main road watch out for buzzards, eagles and much more wild life. (Important note to drivers, stop and look! it's a single track road).

### **THE ROAD TO SEAVIEW COTTAGE**

Sailing into Stornoway bay on the Caledonian McBrayne car ferry - the MV Isle of Lewis, visitors to the island will see the imposing 17th Century Lews Castle set in its own grounds and overlooking the bustling fishing harbour. Lewis, the largest in the chain of islands has Stornoway as its commercial and administrative centre.

Before leaving Stornoway you may choose to stop and shop for the hand dived scallops and the fresh langoustines or the succulent heather grazed Lewis lamb (try some on the barbeque)! Also, Stornoway black pudding (probably the world's best). The local Scottish Co-op and Somerfield offers a wide choice of grocery supplies aswell as a fine range of wines and whiskies (naturally!).

The meat and seafoods originating from the crofts and sea lochs of the Western Isles, come from one of the cleanest and most natural environments in the western world.

Heading south on the A859 (Tarbert and Harris) out of Stornoway for a couple of miles watching for the left turn that takes you to Grimshader.



*Open moorland on the way to Seaview*

## YOUR HOLIDAY AREA

The theme of the holiday is doing your own thing, as the islands are not at all commercial. If you are into exploring, there are a wealth of areas to walk and fish freely within a stone's throw of the house as well as most of the island. Golden eagles and other birds of prey are resident in the surrounding hills. It is also not unusual to see seals, otters, dolphin and whales and numerous varieties of birds which will give you great pleasure in viewing in their natural habitat.

### *Beautiful near empty beaches*

For the more energetic, the west side beaches of Shawbost, Dalbeg and Dalmore have become a magnet for experienced surfers, but the novice should beware of the exceptionally strong tides and currents that can affect these waters (professional training is available on the Island). It's just fun though to sit and watch! Plenty of other beautiful beaches can be found at Uig, Bosta and Ness and on the east side, north of Stornoway (B895) heading toward Col and Tolsta, if fact there are beaches large and small scattered all over if you have the time to explore.

### *Callanish Stones*

A 40-minute drive takes you to the neolithic Callanish Standing Stones and its excellent visitor centre, recommended for a lunchtime stop. Nearby is the Gearrannan Black House Village and the fortified Broch at Dun Carloway.



A 90-minute gentle drive from Grimshader takes you to the white beaches of Harris and the spectacular settings for the popular TV *Castaway* series on the island of Taransay, which you can visit for the day. If you can get down to Harris a drive round the coast road covering both east and west coastlines is worthwhile. Also a walk into the hills of Harris will take you to heights that will open up the islands to your view, try Clisham or Chaipaval at Toe Head where you may spot St Kilda on a clear day.

If you enjoy 'wild' then this is for you!



*Sunrise at Grimshader*



*Bosta beach*



*Seaview from the other side of the loch*



*Taransey from Harris*



*Seaview from the front*



*Clean, fresh sands at Traigh Mhor beach  
(Tolsta - east side)*



*Winter scene*



*A westside beach*